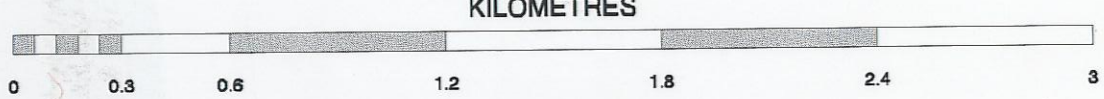


INTERPRETIVE MAP

FINS/Babine Forest Products
Fish and Fish Habitat Inventory
Helene/Augier-Pinkut
Mapsheet 093K034

Map 7 of 8
SCALE 1 : 20,000



Projection: ALBERS EQUAL AREA

PRINTED: May 03, 2001

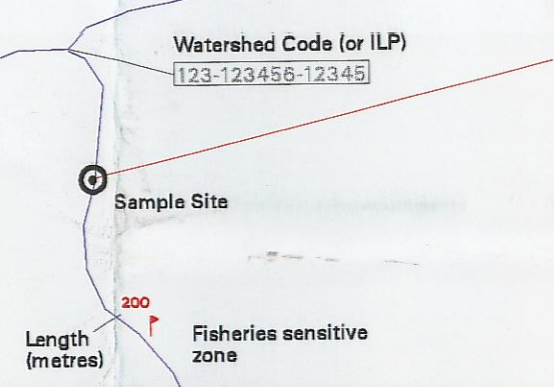
AML - y:\active\fin\am\fin\ffhinterp99(suppl).aml
Supplement AML - y:\active\fin\am\fin\ffhinterp99(suppl).aml

PREPARED BY:

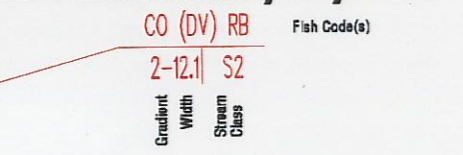


Stream Information Summary

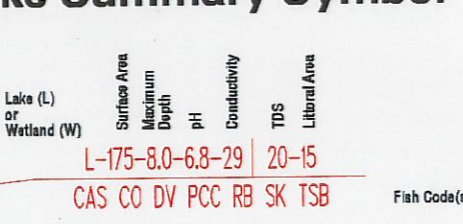
Site Data Symbol



Reach Summary Symbol



Lake Summary Symbol



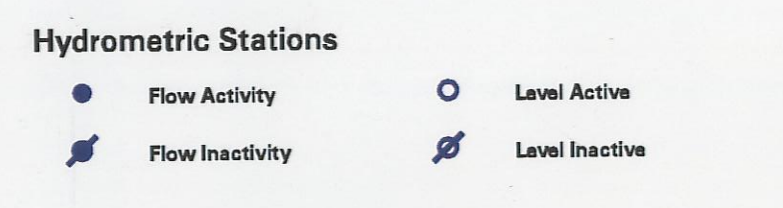
Enhancement / Management Activities



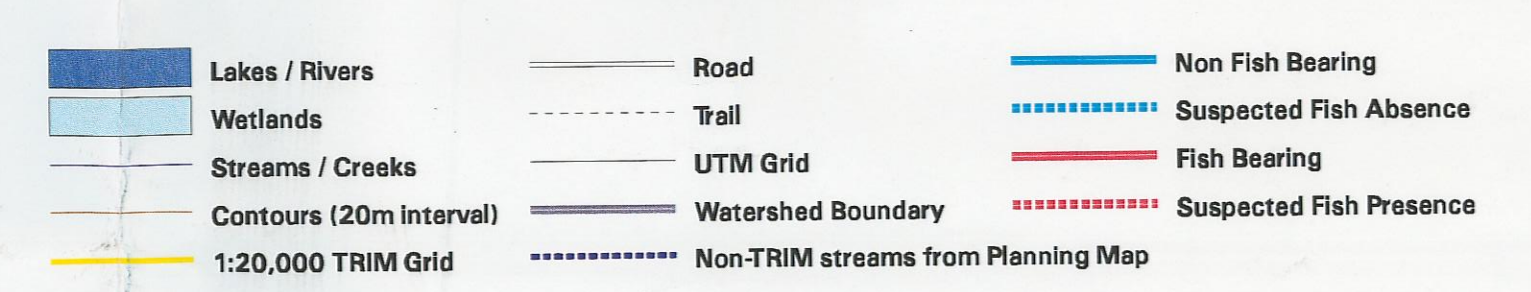
Obstructions



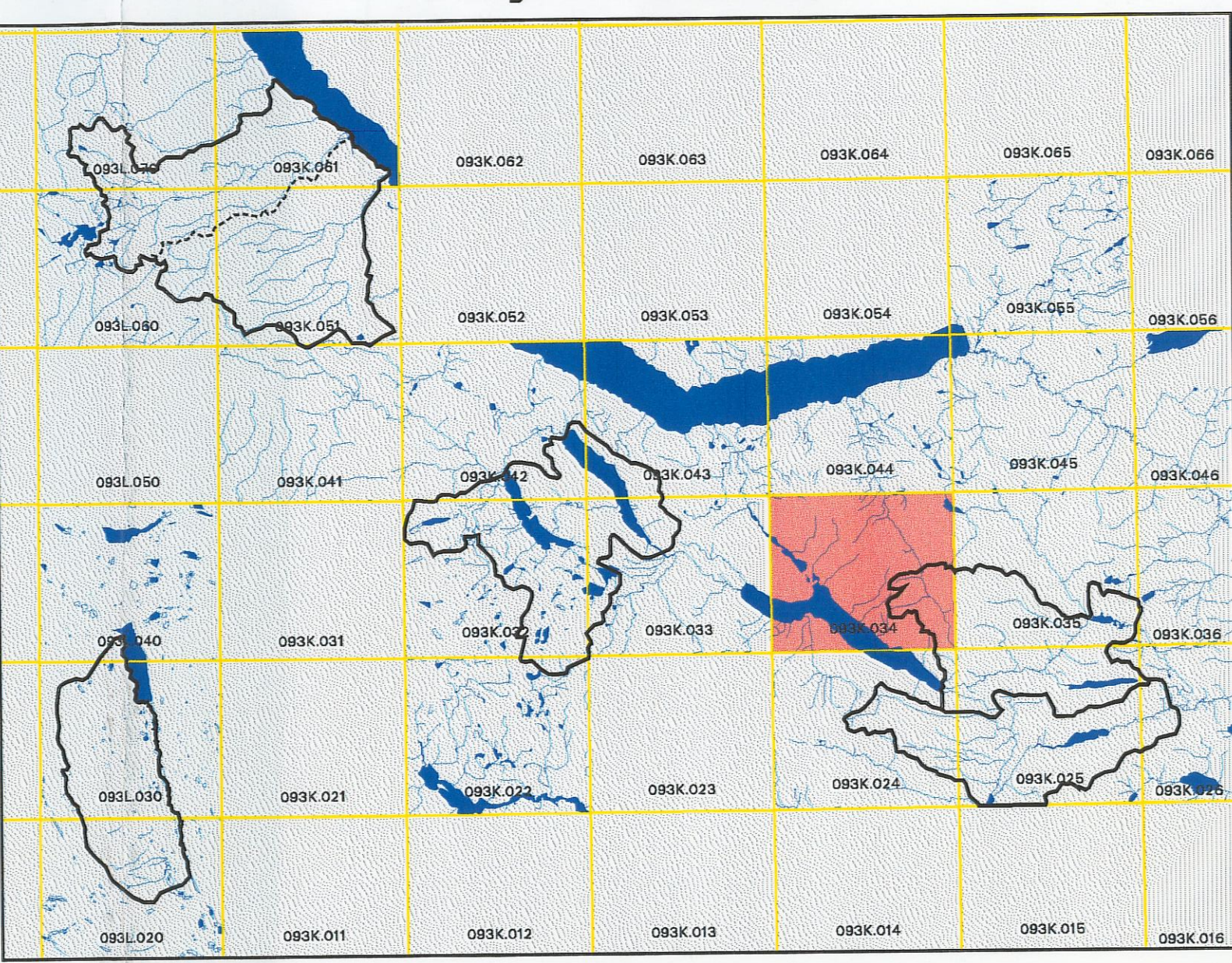
Hydrometric Stations



TRIM Features



Project Area(s)



Source Information

BASE: TR
LOC: APE
HAB: INV
FISH: INV
DATE INV: September 01 - October 21, 1999
STR SYM: INV
LK SYM: INV
INV MGMT: MELP

MAPPING STANDARDS: B.C. Ministry of Fisheries - "Standards for Fish and Fish Habitat Maps"
VERSION: 2.0
DATE: May 1998

MAP ACCURACY IS PLUS OR MINUS 20 METRES

Fish Species Codes				Stream Confinement Codes				Stream Pattern Codes				Stream Morphology Codes				Substrate Codes				Disturbance Indicator Codes				
DVBT	Dolly Varden/Bull Trout	KO	Kokanee	WCT	Westslope Cutthroat Trout	EN	Entrenched	ST	Straight	RP	Riffle Pool	F	Fines <2mm	01	Beaver Dams	D1	Small woody debris	01	Beaver Dams	D1	Small woody debris	01	Beaver Dams	D1
CT	Cutthroat Trout	LKC	Lake Chub	SU	General Sucker	CO	Confined	SI	Sinuous	CP	Cascade Pool	G	Gravels 2-64mm	B1	Abandoned Channels	D2	Large woody debris	B1	Abandoned Channels	D2	Large woody debris	B1	Abandoned Channels	D2
RB	Rainbow Trout	BB	Burbot	NS	Not Sampled	FC	Frequently Confined	IR	Irregular, wandering	SP	Step Pool	C	Cobbles 64-256mm	B2	Eroding Banks	D3	Recently formed LWD jams	B2	Eroding Banks	D3	Recently formed LWD jams	B2	Eroding Banks	D3
TSB	Threespine Stickleback	CAS	Prickly Sculpin	NCD	Not Classified Drainage	OC	Occasionally Confined	IM	Irregular, meandering	LC	Large Channel	B	Boulders >256mm	B3	Avulsions	S1	Homogeneous bed texture	B3	Avulsions	S1	Homogeneous bed texture	B3	Avulsions	S1
CAL	Coastrange Sculpin	C	General Minnows	NVC	No Visible Channel	UN	Unconfined	ME	Regular meander	C1	Extensive Riffles or Cascades	S2	Sediment fingers	C1	Extensive Riffles or Cascades	S2	Sediment fingers	C1	Extensive Riffles or Cascades	S2	Sediment fingers	C1	Extensive Riffles or Cascades	S2
PK	Pink Salmon	SK	Sockeye Salmon	NFC	No Fish Caught	N/A	Not Applicable	TM	Tortuous meanders	C2	Minimal Pool Area	S3	Sediment wedges	C2	Minimal Pool Area	S3	Sediment wedges	C2	Minimal Pool Area	S3	Sediment wedges	C2	Minimal Pool Area	S3
SP	Splake	CSU	Largescale Sucker	NFC	No Fish Caught					C3	Elevated Mid-channel Bar	S4	Extensive bars	C3	Elevated Mid-channel Bar	S4	Extensive bars	C3	Elevated Mid-channel Bar	S4	Extensive bars	C3	Elevated Mid-channel Bar	S4
CCG	Slimy Sculpin	CO	Coho Salmon	SP	Species present, not identified					C4	Multiple Channels or Bars	S6	Extensively scoured zones	C4	Multiple Channels or Bars	S6	Extensively scoured zones	C4	Multiple Channels or Bars	S6	Extensively scoured zones	C4	Multiple Channels or Bars	S6
WF	White Fish General	CC	General Sculpin	(I)	Presumed fish presence					C6	Disturbed Stone Lines			C6	Disturbed Stone Lines			C6	Disturbed Stone Lines			C6	Disturbed Stone Lines	

This product has been accepted as being in accordance with approved standards within the limits of Ministry quality assurance procedures. Users are cautioned that interpreted information on this product developed for the purposes of the Forest Practices Code Act and Regulations, for example stream classifications, is subject to review by a statutory decision maker for the purpose of determining whether or not to approve an operational plan.